

These are some other locations where you can find our bagged coffees. Most have 1/2 lb. bags, already ground different flavors for auto drip. If you are near one of these places and would like to pick up a certain flavor, whole bean or ground different, please contact us and we can arrange to have some for you to pick up. We are so excited to be a vendor at each of these great antique shops/malls. They all have great vendors and items!



Evenbrooke Makers and Finders Marketplace
15 Murphy Drive, Lexington, NC
<https://www.facebook.com/evenbrookemarket/>

THIS IS ALSO OUR SECOND LOCATION FOR A COFFEE SHOP. WE ARE RIGHT INSIDE EVENBROOKE WITH OUR FULL MENU. Our hours there are Thursday & Friday 10-5 and Saturday 9-5.



Collectors Depot of Lexington
111 E. 7th Avenue, Lexington, NC
<https://www.facebook.com/Collectorsdepot>



Shoppes on Patterson Antiques
2804 Patterson Street, Greensboro, NC
<https://www.facebook.com/Shoppes-On-Patterson-126164600800307/>



Gibsonville Antiques & Collectibles
106 E. Railroad Avenue, Gibsonville, NC
<https://www.facebook.com/GibsonvilleAntiquesAndCollectibles>



Golden Antiques & Treasures
4537 US Hwy. 220N, Summerfield, NC
<https://www.facebook.com/goldenantiques>



Main Street Market Antiques, Artisans
140 N. Main Street, Mount Airy, NC
<https://www.facebook.com/mainstreetmarketmta>



White Owl Antique Mall
8455 NC Hwy. 49 N., Mt. Pleasant, NC
<https://www.facebook.com/WhiteOwlAntique>

**Soon to be our third coffee shop location!
Coming in August 2020!**



Main Street Antique Mall & Design Gallery
500 S. Main Street, Mooresville, NC
<https://www.facebook.com/MainStAntique>



Antique Market Place
6428 Burnt Poplar Road, Greensboro, NC
<https://www.facebook.com/AMPGreensboro>



Resettlers Antique Mall

1635 Salisbury Road, Statesville, NC

<https://www.facebook.com/Resettlers-Antique-Mall-Statesville-NC-1758601011044358>



Countryside Collectibles & Antique Mall

219 Chatham Square, Siler City, NC

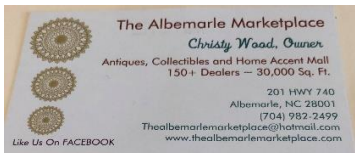
<https://www.facebook.com/countrysidecollectibles>



Granddaddy's Antiques

2316 Maple Avenue, Burlington, NC

<https://www.facebook.com/GranddaddysAntiqueMall>



The Albermarle Marketplace

201 Hwy. 740, Albermarle, NC

<https://www.facebook.com/thealbmarketplace>